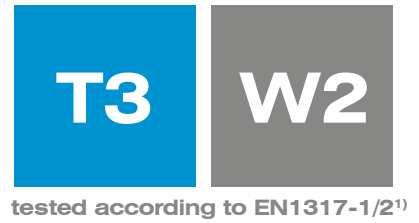


REBLOC 85BFS_8

Standard element

Application
Temporary system

Installation
Free standing

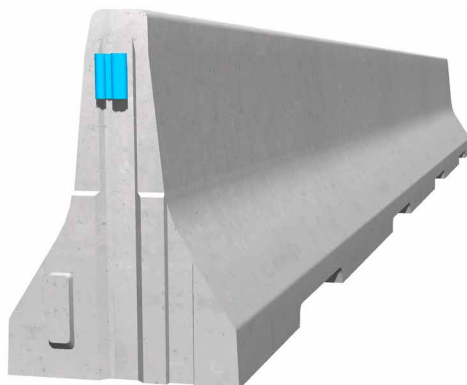


Containment level **T3** (covers T2 and T1)
 Working width **W2** (covers W3, W4, W5, W6, W7 and W8)
 Impact severity level **ASI A**



Product features & Advantages

- Cost savings due to tested application as temporary and permanent system
- Single-row and double-sided system for contraflow sections
- Permanent usage as backfilled, double-row system for H2/W5 (according to EN1317-2)



The REBLOC 85BFS_8 is designed for the REBLOC SWITCH® application. Firstly, the double-sided system is used as a temporary barrier. Afterwards, the elements are installed as a permanent, back-filled system.

Time and money is saved by reducing the number of transport journeys. In addition, the costs for the temporary system are reduced as the concrete elements are already on site.

¹⁾ Based on evaluation of a modification in accordance to EN1317

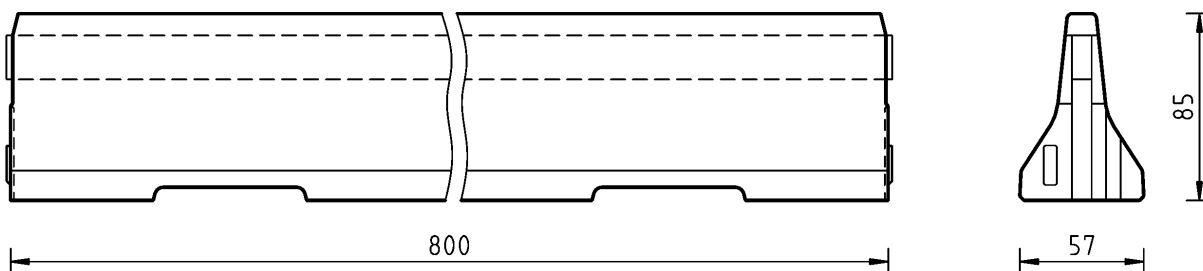
REBLOC 85BFS_8

Standard element



tested according to EN1317-1/2¹⁾

Technical data



all dimensions in cm

Containment level	T3
Working width	W2
Impact severity level	ASI A
Vehicle intrusion	VI1
Installation	free standing on asphalt/concrete
Terminal elements	not necessary, optional available
Dimensions L x W x H in cm	800 x 57 x 85 cm
Weight/element	4.600 kg
Elements/truck (24 t)	5 elements
Minimum installation length	80 m (not including terminal elements)
Curve radius	$r \geq 225$ m, smaller radii on request
Concrete quality	C30/37, exposure class according to national requirements
Coupling/exposed steel parts	fully integrated, exposed parts hot-dip galvanized

¹⁾ Based on evaluation of a modification in accordance to EN1317