

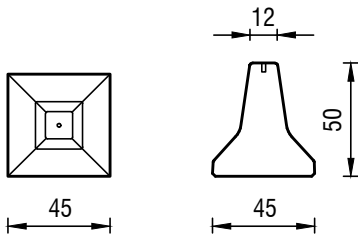
MINIBLOC 50_BS



Bollard square made of concrete
for securement of urban and industrial areas

not tested according to EN1317

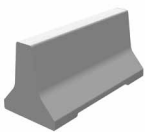
Technical data



all dimensions in cm

Installation	free standing
Dimensions L x W x H in cm	45 x 45 x 50 cm
Weight/element	80 kg
Lifting possibility	Anchor loop RD16
Application	<p>Ideal for the securement of:</p> <ul style="list-style-type: none"> ➤ Parking and storage locations ➤ Sidewalks and cycle paths ➤ Traffic islands, entrances and exit gates ➤ Fall protection for slopes and path limitation ➤ Events

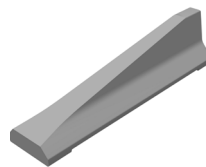
Further MINIBLOC elements



MINIBLOC 50_1
Standard element



MINIBLOC 50_2
Standard element



MINIBLOC 50_2T
Terminal element
(inclination 1:5)



MINIBLOC 50_C90
Corner element

