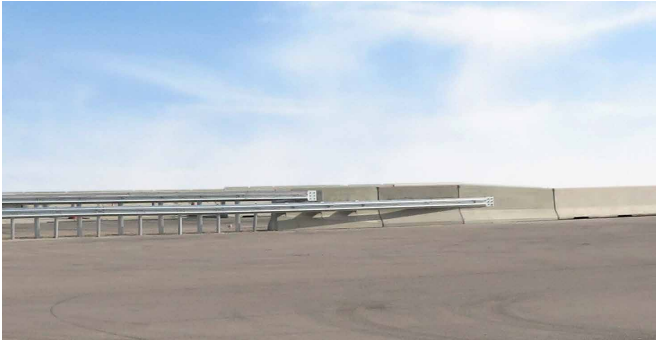


# TRANSITION REBLOC 100\_8 <> KB2 RH3

Transition for pile driving ground



tested according to ENV1317-4

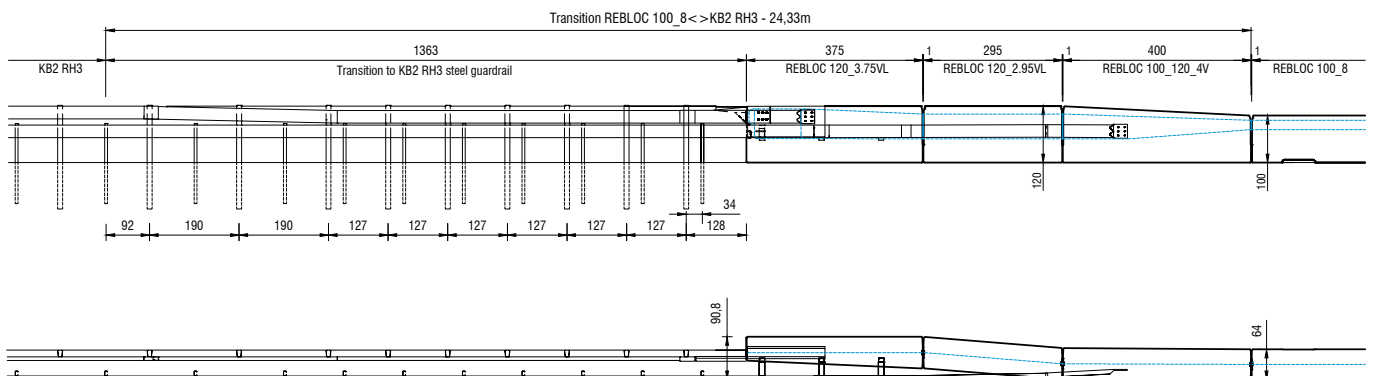


Containment level  
Working width  
Impact severity level

**H4b** (covers H3, H2, H1, N1, T3, T2 and T1)  
**W6** (covers W7 and W8)  
**ASI B**

## Product features & Advantages

- Transition tested according to ENV1317-4
- Transition from steel system KB2 RH3 to REBLOC 100\_8 in both directions of traffic flow possible
- Composed of steel construction KB2 RH3 and one precast concrete element REBLOC 100\_120\_4V, one element 120\_2.95VL/R and one element 120\_3.75VL/R



## Technical data

Weight REBLOC 100_120_4V	3.450 kg
Weight REBLOC 120_2.95VL/R	2.910 kg
Weight REBLOC 120_3.75VL/R	3.450 kg
Total length	24,33 m
Coupling/free steel parts	fully integrated, exposed parts hot-dip galvanized
Steel system elements	hot-dip galvanized

## REBLOC GmbH

Wiener Straße 662 · 3571 Gars/Kamp · Austria  
Tel.: +43 (0) 2985 30528 2900  
Fax: +43 (0) 2985 30528 2901  
office@rebloc.com