

# REBLOC 120A\_7.5

Standard element

Application  
**Permanent system**

Installation  
**Anchored**



tested according to EN1317-1/2

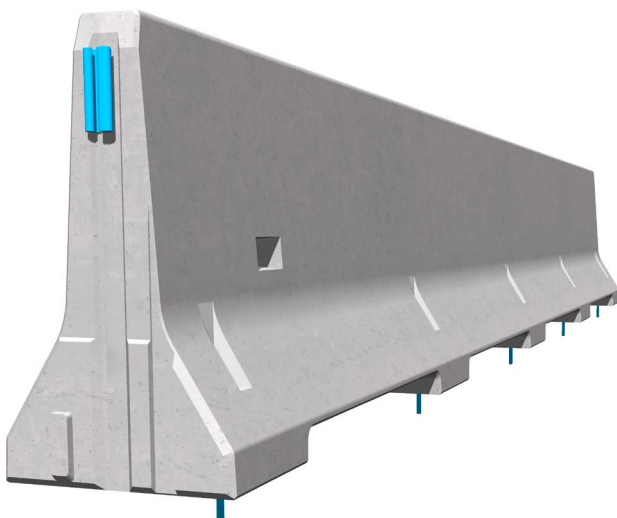


Containment level  
Working width  
Impact severity level

**H4b** (covers H3, H2, H1, N1, T3, T2 and T1)  
**W2** (covers W3, W4, W5, W6, W7 and W8)  
**ASI B**

## Product features & Advantages

- Anchoring depth only 12 cm in order to protect the bridge sealing
- Minimal system movement and slim construction
- Application on outermost edge of bridge possible



The anchored system with minimal working width is ideal for the application on the edge of bridges, for the protection of bridge piers as well as along the verge of roads.

The integrated, innovative coupling does not contain any loose parts. This does not only enhance the safety, but also the installation speed. The easy installation, which does not depend on weather conditions, reduces the disruptions of the traffic flow.

A system related dilatation for bridge expansion joints was installed in the first third of the installation length. This evens out natural movements of the construction due to temperature fluctuations and transmits longitudinal forces.

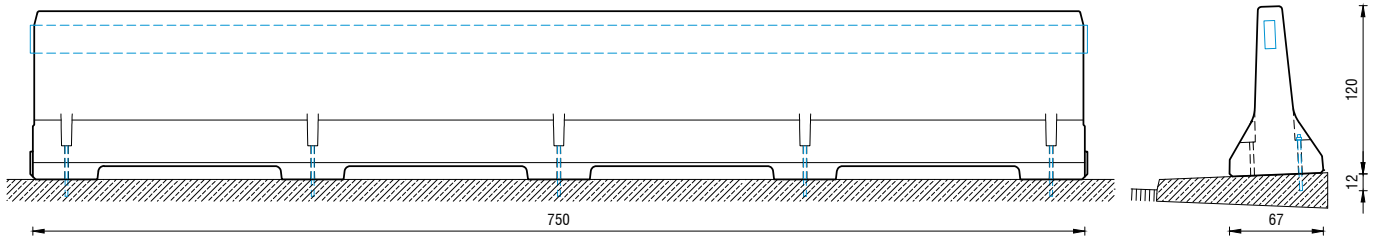
# REBLOC 120A\_7.5

Standard element



tested according to EN1317-1/2

## Technical data



all dimensions in cm

Containment level	H4b
Working width	W2
Impact severity level	ASI B
Vehicle intrusion	VI6
Installation	anchored on bridge cap (concrete) (5 x adhesive anchors M20 in concrete per element)
Terminal elements	not necessary, optional available
Dimensions L x W x H in cm	750 x 67 x 120 cm
Weight/element	6.000 kg
Elements/truck (24 t)	4 elements
Minimum installation length	75 m (not including terminal elements)
Curve radius	$r \geq 250$ m, smaller radii on request
Coupling/exposed steel parts	fully integrated, exposed parts hot-dip galvanized
CE certification	✓

## System elements - combinable

Dilatation	Length compensation
REBLOC dilatation coupling RC200_D753	+/- 10 cm, larger elongation on request