

REBLOC 100H_2

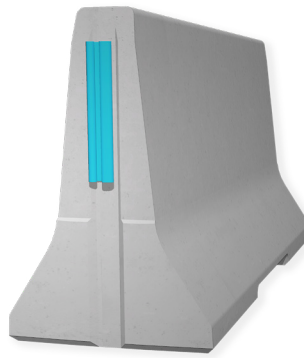
Technical Datasheet

ASI B

REBLOC 100H_2

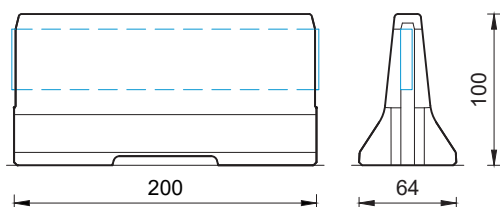
Precast Concrete
Vehicle Restraint System

Permanent System
Free standing



Technical data

| | |
|------------------------------|---|
| Containment level | L3 / H3 |
| Working width | W6 ($W_N \leq 2.1$ m) |
| Impact severity level | ASI B |
| Vehicle intrusion | VI9 ($VI_N > 3.5$ m) |
| Installation | free standing on asphalt concrete |
| Application | single-sided double-sided |
| Minimum installation length | 76 m (38 elements) + initial/end anchorage |
| Initial/end anchorage | required (according to anchor chart 39-10501): e.g. REBLOC 100_4T or force closure |
| Dimensions L x W x H in cm | 200 x 64 x 100 cm |
| Weight/element | approx. 1510 kg |
| Curve radius | $r \geq 27$ m, smaller radii on request |
| Coupling/exposed steel parts | fully integrated, exposed parts hot-dip galvanized |
| CE certification | ✓ |



all dimensions in cm