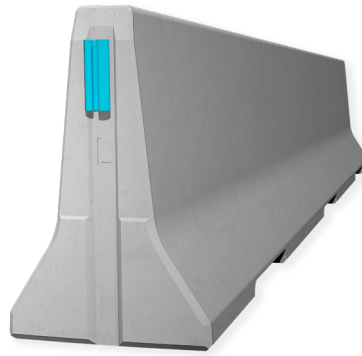


REBLOC 100L_6

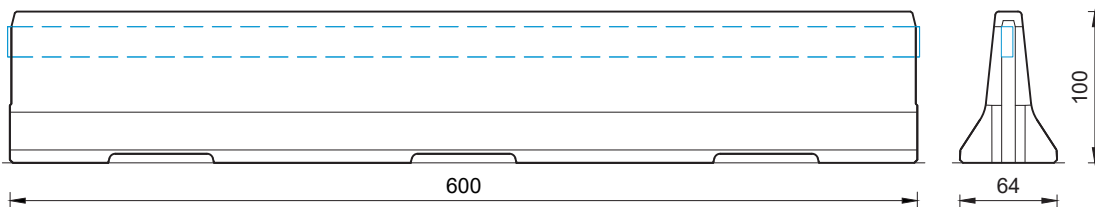
Technical datasheet

ASI B

REBLOC 100L_6

**Precast Concrete
Vehicle Restraint System****Permanent System
Free standing****Technical data**

Containment level	H2
Working width	W5 ($W_N \leq 1.7$ m)
Impact severity level	ASI B
Vehicle intrusion	VI5 ($VI_N \leq 1.7$ m)
Installation	free standing on asphalt concrete
Application	single-sided double-sided
Minimum installation length	84 m (14 elements) + initial/end anchorage
Initial/end anchorage	required (according to anchor chart 39-10501): e.g. REBLOC 100_4T or force closure
Dimensions L x W x H in cm	600 x 64 x 100 cm
Weight/element	approx. 4480 kg
Curve radius	$r \geq 80$ m, smaller radii on request
Coupling/exposed steel parts	fully integrated, exposed parts hot-dip galvanized
CE certification	✓



all dimensions in cm

REBLOC GmbH

Ziegelofen-Straße 736 · 3571 Gars/Kamp · Austria
 Tel.: +43 (0) 2985 30528 2900
 Fax: +43 (0) 2985 30528 2901

office@rebloc.com | www.rebloc.com