

REBLOC 100SFP_8

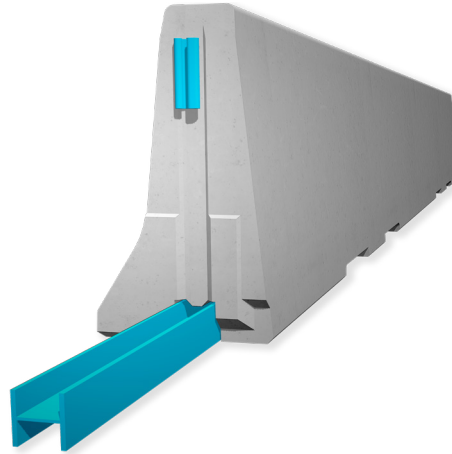
Technical Datasheet

ASI B

REBLOC 100SFP_8

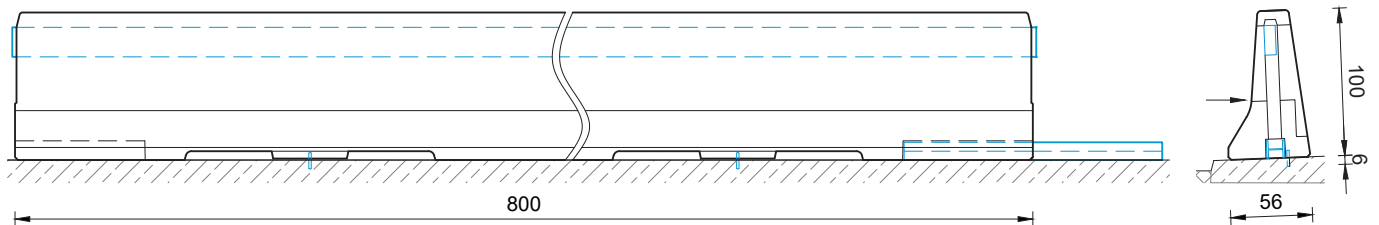
**Precast Concrete
Vehicle Restraint System**

**Permanent System
Free standing with
position securing (pin)**



Technical data

Containment level	L2 / H2
Working width	W3 ($W_N \leq 1.0$ m)
Impact severity level	ASI B
Vehicle intrusion	VI1 ($VI_N \leq 0.6$ m)
Installation	free standing with position securing (pin)
Application	single-sided
Minimum installation length	96 m (12 elements) + initial/end anchorage
Initial/end anchorage	required (according to anchor chart 39-10501): e.g. REBLOC 100SF_4TL 100SF_4TR or force closure
Dimensions L x W x H in cm	800 x 56 x 100 cm
Weight/element	approx. 6080 kg
Curve radius	$r \geq 370$ m, smaller radii on request
Coupling/exposed steel parts	fully integrated, exposed parts hot-dip galvanized
CE certification	✓



all dimensions in cm