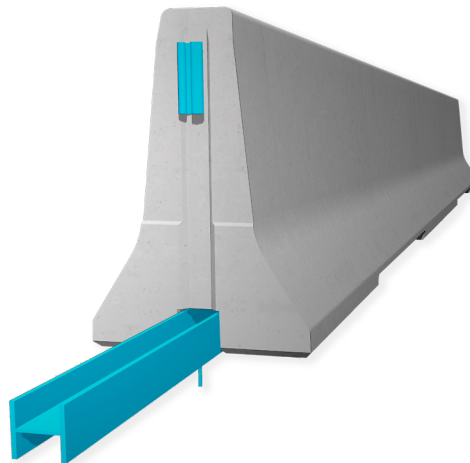


REBLOC 100SFSA_8

Technical Datasheet

**Precast Concrete
Vehicle Restraint System**

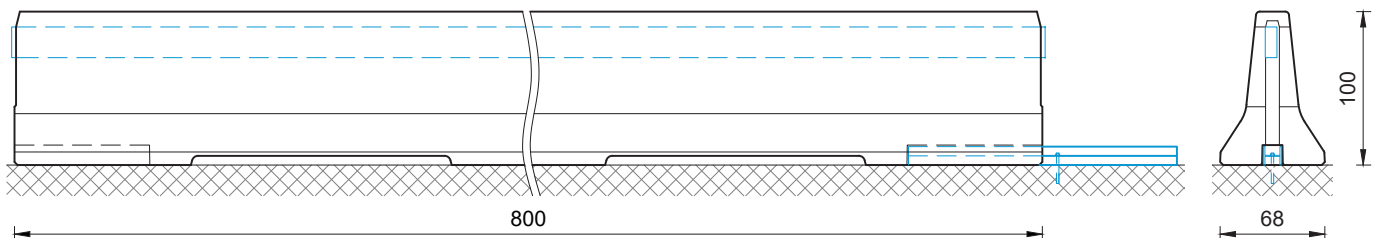
**Permanent System
Free standing with position securing**



REBLOC 100SFSA_8

Technical data

Containment level	H4b	H2
Working width	W5 ($W_N \leq 1.7 \text{ m}$)	W4 ($W_N \leq 1.3 \text{ m}$)
Impact severity level	ASI B	ASI B
Vehicle intrusion	VI8 ($VI_N \leq 3.5 \text{ m}$)	VI1 ($VI_N \leq 0.6 \text{ m}$)
Installation	free standing with position securing (anchor) (1 x adhesive anchor M16 in concrete asphalt per element)	
Application	single-sided double-sided	
Minimum installation length	96 m (12 elements) + initial/end anchorage	
Initial/end anchorage	required (according to anchor chart 39-10501): e.g. REBLOC 100SFS_4T or force closure	
Dimensions L x W x H in cm	800 x 68 x 100 cm	
Weight/element	approx. 6480 kg	
Curve radius	$r \geq 370 \text{ m}$, smaller radii on request	
Coupling/exposed steel parts	fully integrated, exposed parts hot-dip galvanized	
CE certification	✓	



all dimensions in cm

REBLOC GmbH

Ziegelofen-Straße 736 · 3571 Gars/Kamp · Austria
Tel.: +43 (0) 2985 30528 2900
Fax: +43 (0) 2985 30528 2901

office@rebloc.com www.rebloc.com