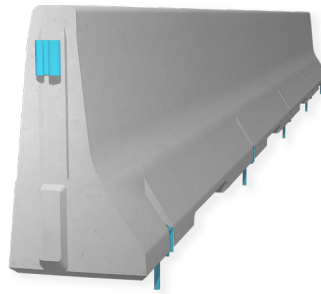
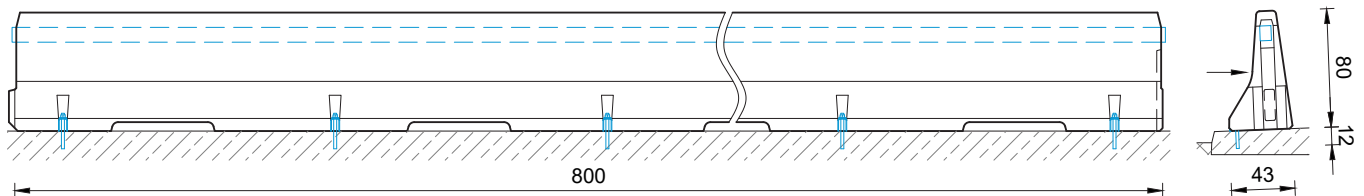


REBLOC 80A_8**Technical Datasheet****ASI B****REBLOC 80A_8****Precast Concrete
Vehicle Restraint System****Permanent System
Anchored****Technical data**

Containment level	H2
Working width	W1 ($W_N \leq 0.6$ m)
Impact severity level	ASI B
Vehicle intrusion	VI2 ($VI_N \leq 0.8$ m)
Installation	anchored (5 x M20 adhesive anchors in concrete per element)
Application	single-sided
Minimum installation length	56 m (7 elements)
Initial/end anchorage	not necessary, optional available
Dimensions L x W x H in cm	800 x 43 x 80 cm
Weight/element	ca. 3610 kg
Curve radius	$r \geq 110$ m, smaller radii on request
Coupling/exposed steel parts	fully integrated, exposed parts hot-dip galvanized
CE certification	✓



all dimensions in cm

REBLOC GmbH

Ziegelofen-Straße 736 · 3571 Gars/Kamp · Austria
 Tel.: +43 (0) 2985 30528 2900
 Fax: +43 (0) 2985 30528 2901

office@rebloc.com www.rebloc.com