

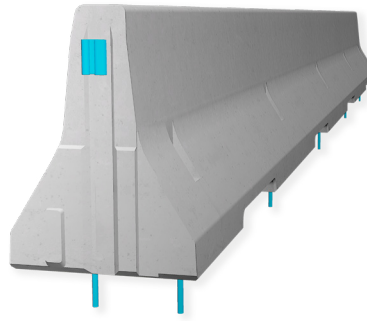
**REBLOC 80XA\_8\_10A**

Technical Datasheet

ASI B

Precast Concrete  
Vehicle Restraint System

Permanent System  
Anchored

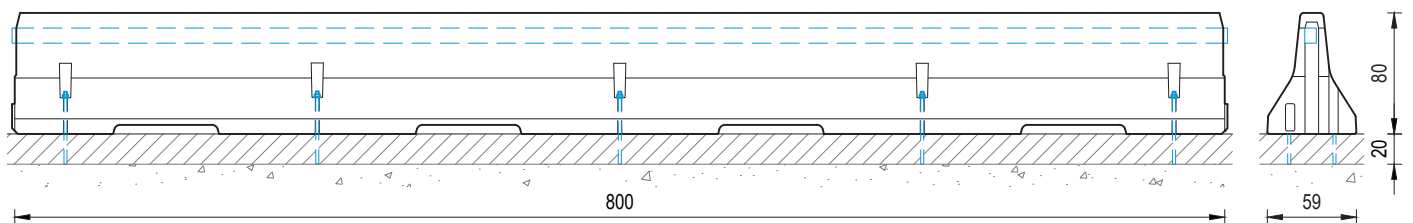


REBLOC 80XA\_8\_10A

**Technical data**

Containment level	H2
Working width	W1 ( $W_N \leq 0.6$ m)
Impact severity level	ASI B
Vehicle intrusion	VI1 ( $VI_N \leq 0.6$ m)
Installation	anchored in asphalt   concrete (per element 10 x adhesive anchors M20)
Application	single-sided   double-sided
Minimum installation length	32 m (4 elements)
Initial/end anchorage	not necessary, optional available
Dimensions L x W x H in cm	800 x 59 x 80 cm
Weight/element	approx. 4620 kg
Curve radius	$r \geq 235$ m, smaller radii on request
Coupling/exposed steel parts	fully integrated, exposed parts hot-dip galvanized
CE certification	✓

Installation on asphalt | concrete



all dimensions in cm

**REBLOC GmbH**

Ziegelofen-Straße 736 · 3571 Gars/Kamp · Austria  
Tel.: +43 (0) 2985 30528 2900  
Fax: +43 (0) 2985 30528 2901

office@rebloc.com [www.rebloc.com](http://www.rebloc.com)