

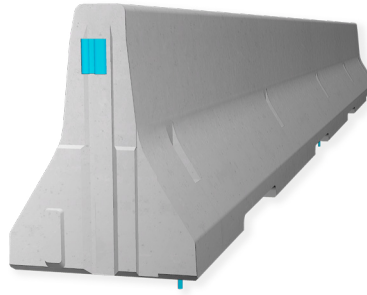
REBLOC 80XA_8_3A

Technical Datasheet

ASI B

Precast Concrete
Vehicle Restraint System

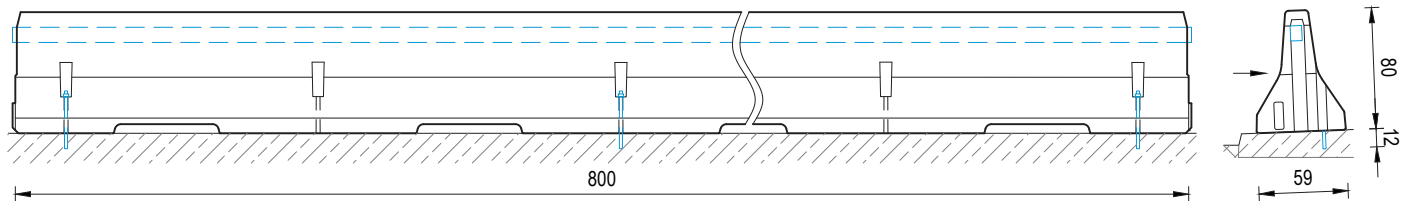
Permanent System
Bridge System
Anchored



REBLOC 80XA_8_3A

Technical data

Containment level	H2
Working width	W2 ($W_N \leq 0.8$ m)
Impact severity level	ASI B
Vehicle intrusion	VI2 ($VI_N \leq 0.8$ m)
Installation	anchored in concrete (per element 3 x adhesive anchors M16 on the front or rear side)
Application	single-sided double-sided
Minimum installation length	56 m (7 elements)
Initial/end anchorage	not necessary, optional available
Dimensions L x W x H in cm	800 x 59 x 80 cm
Weight/element	approx. 4620 kg
Curve radius	$r \geq 235$ m, smaller radii on request
Coupling/exposed steel parts	fully integrated, exposed parts hot-dip galvanized
CE certification	✓



all dimensions in cm

REBLOC GmbH

Ziegelofen-Straße 736 · 3571 Gars/Kamp · Austria
Tel.: +43 (0) 2985 30528 2900
Fax: +43 (0) 2985 30528 2901

office@rebloc.com | www.rebloc.com