

REBLOC 100SFA_8

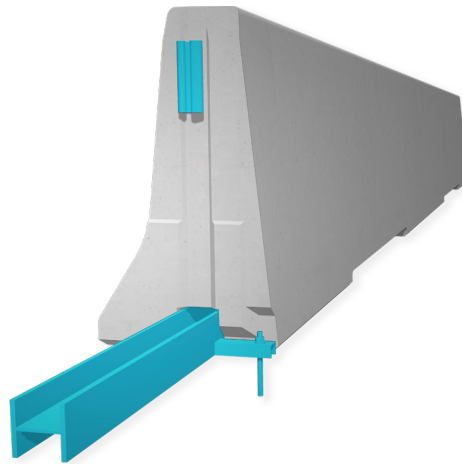
Technical Datasheet

ASI B

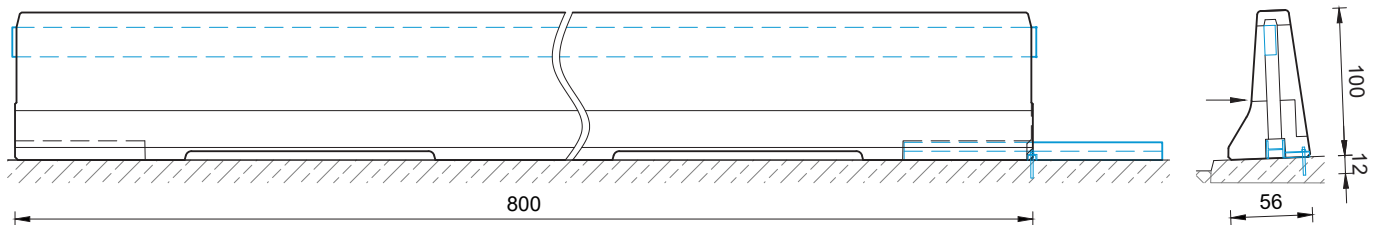
REBLOC 100SFA_8

**Precast Concrete
Vehicle Restraint System**

**Permanent System
Free standing with
position securing (anchor)**

**Technical data**

| | |
|------------------------------|--|
| Containment level | H4b |
| Working width | W4 ($W_N \leq 1.3$ m) |
| Impact severity level | ASI B |
| Vehicle intrusion | VI8 ($VI_N \leq 3.5$ m) |
| Installation | free standing with position securing (anchor) (1 x M16 adhesive anchor in asphalt concrete per element) |
| Application | single-sided |
| Minimum installation length | 96 m (12 elements) + initial/end anchorage |
| Initial/end anchorage | required (according to anchor chart 39-10501): e.g. REBLOC 100SF_4TL 100SF_4TR or force closure |
| Dimensions L x W x H in cm | 800 x 56 x 100 cm |
| Weight/element | approx. 6080 kg |
| Curve radius | $r \geq 370$ m, smaller radii on request |
| Coupling/exposed steel parts | fully integrated, exposed parts hot-dip galvanized |
| CE certification | ✓ |



all dimensions in cm

REBLOC GmbH

Ziegelofen-Straße 736 · 3571 Gars/Kamp · Austria
Tel.: +43 (0) 2985 30528 2900
Fax: +43 (0) 2985 30528 2901

office@rebloc.com | www.rebloc.com