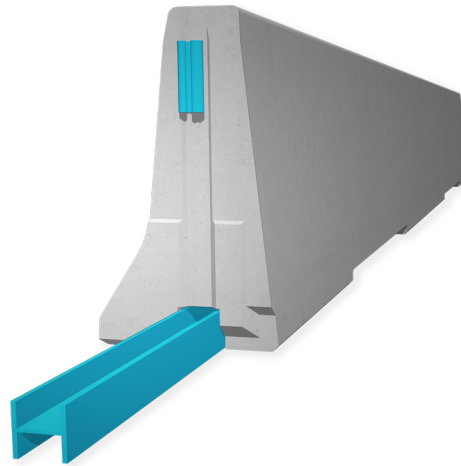


REBLOC 100SF_8

Technical Datasheet

Precast Concrete
Vehicle Restraint System

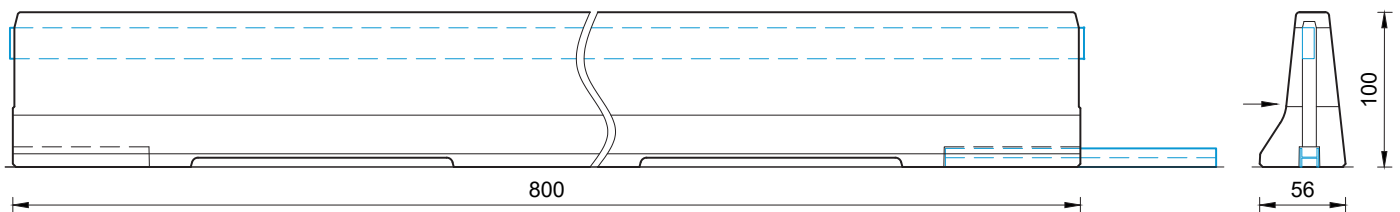
Permanent System
Free standing



REBLOC 100SF_8

Technical data

| | | |
|------------------------------|--|-----------------------------------|
| Containment level | H4b | H2 |
| Working width | W5 ($W_N \leq 1.7 \text{ m}$) | W3 ($W_N \leq 1.0 \text{ m}$) |
| Impact severity level | ASI B | ASI B |
| Vehicle intrusion | VI8 ($VI_N \leq 3.5 \text{ m}$) | VI1 ($VI_N \leq 0.6 \text{ m}$) |
| Installation | free standing on asphalt concrete | |
| Application | single-sided | |
| Minimum installation length | 96 m (12 elements) + initial/end anchorage | |
| Initial/end anchorage | required (according to anchor chart 39-10501): e.g. REBLOC 100SF_4TL 100SF_4TR or force closure | |
| Dimensions L x W x H in cm | 800 x 56 x 100 cm | |
| Weight/element | approx. 6080 kg | |
| Curve radius | $r \geq 370 \text{ m}$, smaller radii on request | |
| Coupling/exposed steel parts | fully integrated, exposed parts hot-dip galvanized | |
| CE certification | ✓ | |



all dimensions in cm

REBLOC GmbH

Ziegelofen-Straße 736 · 3571 Gars/Kamp · Austria
Tel.: +43 (0) 2985 30528 2900
Fax: +43 (0) 2985 30528 2901

office@rebloc.com | www.rebloc.com