

REBLOC 120A_7.5

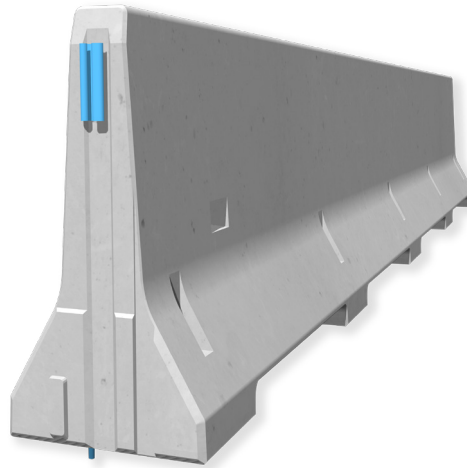
Technical Datasheet

ASI B

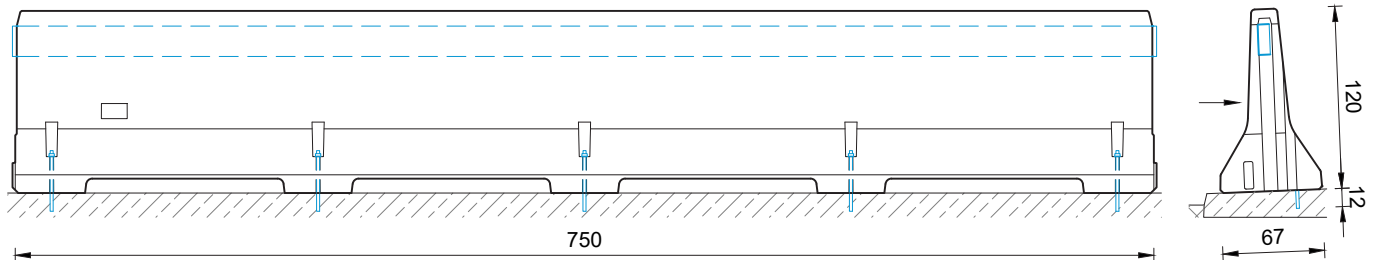
REBLOC 120A_7.5

Precast Concrete
Vehicle Restraint System

Permanent System
Bridge System
Anchored

**Technical data**

Containment level	H4b
Working width	W2 ($W_N \leq 0.8$ m)
Impact severity level	ASI B
Vehicle intrusion	VI6 ($VI_N \leq 2.1$ m)
Installation	anchored in concrete (5 x adhesive anchors M20 per element on the rear side)
Application	single-sided
Minimum installation length	75 m (10 elements)
Initial/end anchorage	not necessary, optional available
Dimensions L x W x H in cm	750 x 67 x 120 cm
Weight/element	approx. 6030 kg
Curve radius	$r \geq 250$ m, smaller radii on request
Coupling/exposed steel parts	fully integrated, exposed parts hot-dip galvanized
CE certification	✓



all dimensions in cm

REBLOC GmbH

Ziegelofen-Straße 736 · 3571 Gars/Kamp · Austria
Tel.: +43 (0) 2985 30528 2900
Fax: +43 (0) 2985 30528 2901

office@rebloc.com | www.rebloc.com