

REBLOC 120_7.5

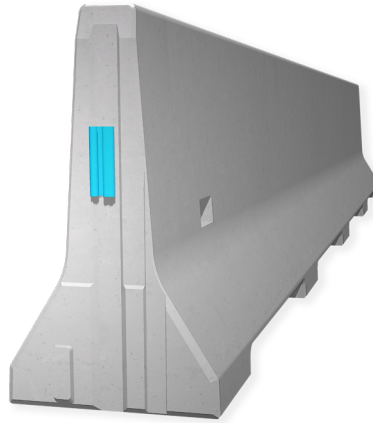
Technical Datasheet

ASI B

REBLOC 120_7.5

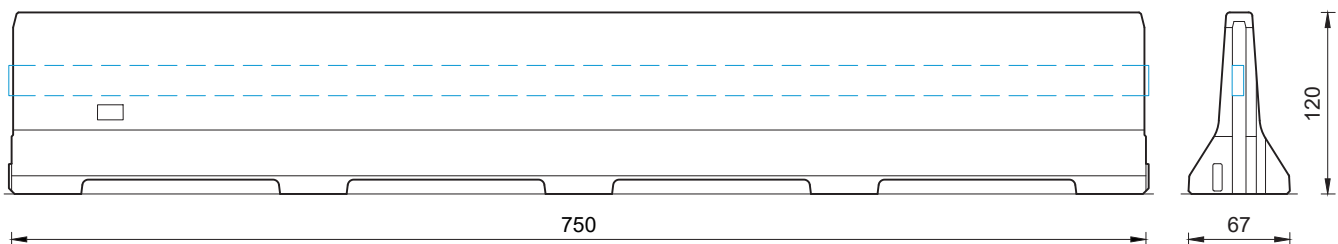
Precast Concrete
Vehicle Restraint System

Permanent System
Free standing



Technical data

| | |
|------------------------------|---|
| Containment level | L4b / H4b |
| Working width | W5 ($W_N \leq 1.7$ m) |
| Impact severity level | ASI B |
| Vehicle intrusion | V18 ($V_{I_N} \leq 3.5$ m) |
| Installation | free standing on asphalt concrete |
| Application | single-sided double-sided |
| Minimum installation length | 82,5 m (11 elements) + initial/end anchorage |
| Initial/end anchorage | required (according to anchor chart 39-10501): e.g. REBLOC 120_5T or force closure |
| Dimensions L x W x H in cm | 750 x 67 x 120 cm |
| Weight/element | approx. 6030 kg |
| Curve radius | $r \geq 250$ m, smaller radii on request |
| Coupling/exposed steel parts | fully integrated, exposed parts hot-dip galvanized |
| CE certification | ✓ |



all dimensions in cm