

**REBLOC 140SFS\_5.5**

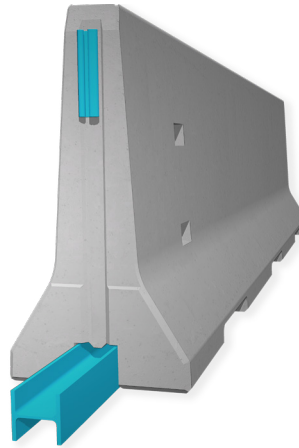
Technical Datasheet

ASI B

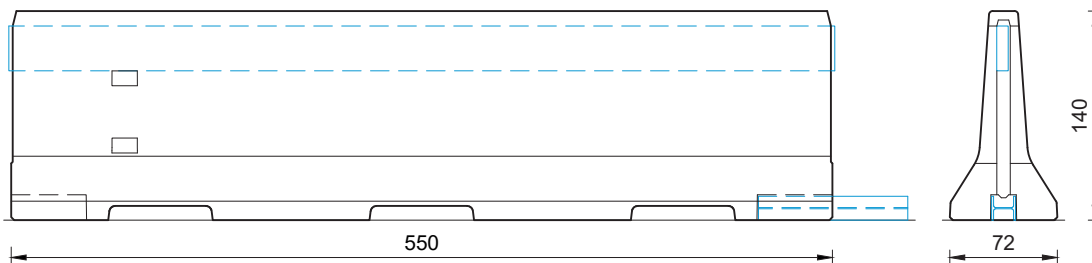
REBLOC 140SFS\_5.5

Precast Concrete  
Vehicle Restraint System

Permanent System  
Free standing

**Technical data**

Containment level	H4a
Working width	W4 ( $W_N \leq 1.3 \text{ m}$ )
Impact severity level	ASI B
Vehicle intrusion	VI6 ( $VI_N \leq 2.1 \text{ m}$ )
Installation	free standing on asphalt   concrete
Application	single-sided   double-sided
Minimum installation length	88 m (16 elements) + initial/end anchorage
Initial/end anchorage	required (according to anchor chart 39-10501): e.g. REBLOC 140SFS_6T or force closure
Dimensions L x W x H in cm	550 x 72 x 140 cm
Weight/element	approx. 6030 kg
Curve radius	$r \geq 195 \text{ m}$ , smaller radii on request
Coupling/exposed steel parts	fully integrated, exposed parts hot-dip galvanized
CE certification	✓



all dimensions in cm

**REBLOC GmbH**

Ziegelofen-Straße 736 · 3571 Gars/Kamp · Austria  
Tel.: +43 (0) 2985 30528 2900  
Fax: +43 (0) 2985 30528 2901

office@rebloc.com [www.rebloc.com](http://www.rebloc.com)