

REBLOC 80XA_8

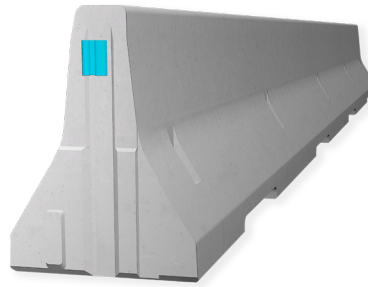
Technical Datasheet

ASI B

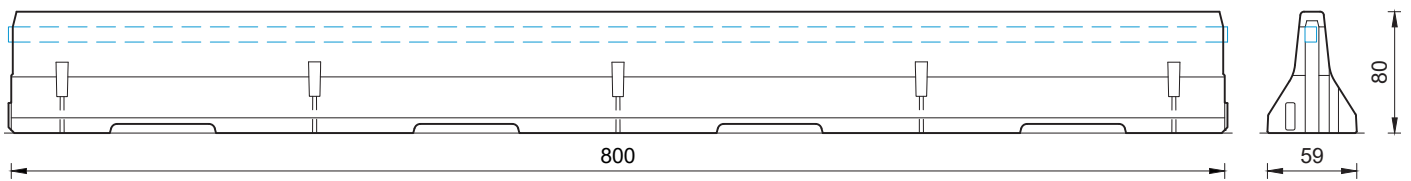
REBLOC 80XA_8

Precast Concrete
Vehicle Restraint System

Permanent System
Free standing

**Technical data**

| | |
|------------------------------|---|
| Containment level | N2 |
| Working width | W3 ($W_N \leq 1.0$ m) |
| Impact severity level | ASI B |
| Installation | free standing on asphalt concrete |
| Application | single-sided double-sided |
| Minimum installation length | 112 m (14 elements) + initial/end anchorage |
| Initial/end anchorage | required (according to anchor chart 39-10501): e.g. REBLOC 80X_4T or force closure |
| Dimensions L x W x H in cm | 800 x 59 x 80 |
| Weight/element | approx. 4620 kg |
| Curve radius | $r \geq 250$ m, smaller radii on request |
| Coupling/exposed steel parts | fully integrated, exposed parts hot-dip galvanized |
| CE certification | ✓ |



all dimensions in cm

REBLOC GmbH

Ziegelofen-Straße 736 · 3571 Gars/Kamp · Austria
Tel.: +43 (0) 2985 30528 2900
Fax: +43 (0) 2985 30528 2901

office@rebloc.com | www.rebloc.com