

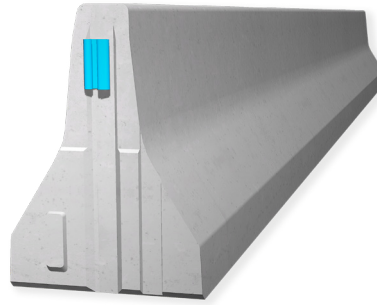
# REBLOC 84XEAL\_8

## Technical Datasheet

ASI B

Precast Concrete  
Vehicle Restraint System

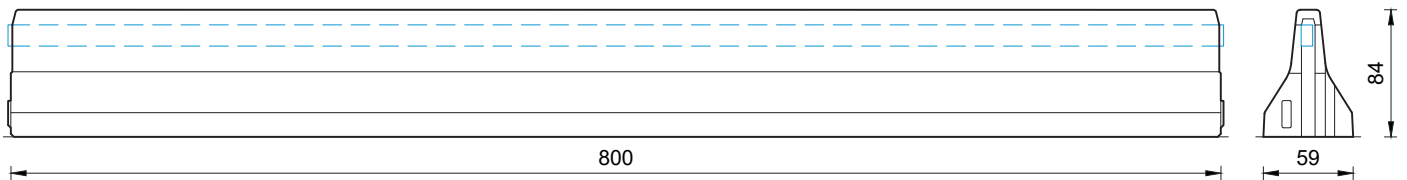
Permanent System  
Free standing



REBLOC 84XEAL\_8

### Technical data

Containment level	N2
Working width	W3 ( $W_N \leq 1.0$ m)
Impact severity level	ASI B
Installation	free standing on asphalt   concrete
Application	single-sided   double-sided
Minimum installation length	112 m (14 elements)
Initial/end anchorage	required (according to anchor chart 39-10501): e.g. REBLOC 84XEA_4T.01 or force closure
Dimensions L x W x H in cm	800 x 59 x 84
Weight/element	approx. 4610 kg
Curve radius	$r \geq 235$ m, smaller radii on request
Coupling/exposed steel parts	fully integrated, exposed parts hot-dip galvanized
CE certification	✓



all dimensions in cm

### REBLOC GmbH

Ziegelofen-Straße 736 · 3571 Gars/Kamp · Austria  
Tel.: +43 (0) 2985 30528 2900  
Fax: +43 (0) 2985 30528 2901

office@rebloc.com [www.rebloc.com](http://www.rebloc.com)