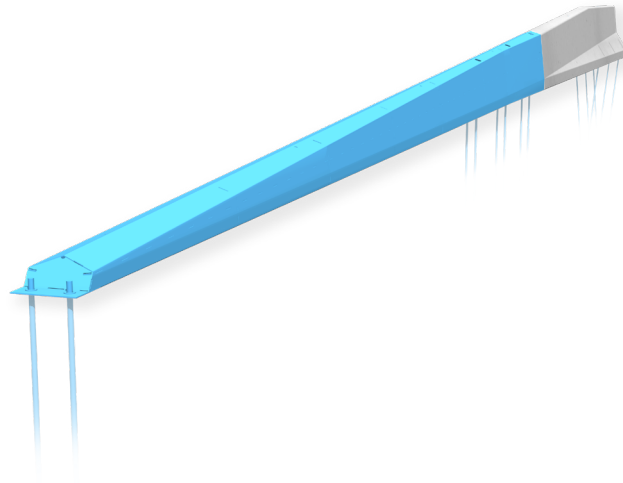


REBLOC TE 80XA_18T_P.1

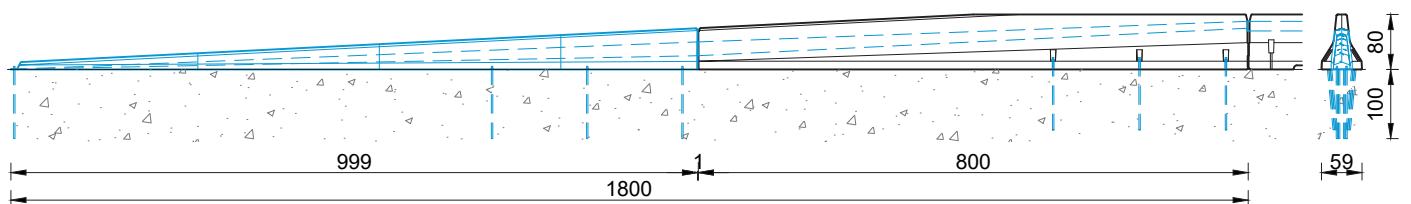
Technical Datasheet

ASI A

REBLOC TE 80XA_18T_P.1

Terminal**Temporary and permanent application
Anchored****Technical data**

Performance class	P2
Location	A (Terminal on upstream as well as downstream position)
Impact severity level	ASI A
Permanent lateral displacement	D_a = class x1 D_d = class y1
Exit box dimension	Class Z₁
Installation	anchored in compacted gravel 14 x anchor pins RPIN20_1050
Application	single-sided double-sided
Required elements	1 x steel element REBLOC TE80XA_10T 1 x concrete element REBLOC TE80XA_8T
Steel element REBLOC TE80XA_10T Dimensions L x B x H in cm Weight	999 x 24-31 x 60 cm ca. 290 kg
Concrete element REBLOC TE80XA_8T Dimensions L x B x H in cm Weight	800 x 31-59 x 60-80 cm ca. 4050 kg
Coupling/exposed steel parts	fully integrated, exposed parts hot-dip galvanized
Test standard	ENV 1317-4:2001
Direct compatible safety barriers	all safety barriers of series REBLOC 80XAS 92XES
Further compatible safety barriers	all REBLOC safety barriers. Connection to terminals always with corresponding transition elements. No transition element with height difference may be connected directly to the terminal.

**Note initial/end anchorage:**

If safety barriers require fixed anchoring at the beginning and end of the system, such anchoring must also be provided in combination with the terminals. If necessary, spot foundations must be made at the appropriate points to ensure effective initial/end anchoring. In such cases, REBLOC must be consulted.

all dimensions in cm