

# TR F31 Super-Rail Eco

## ↔ REBLOC 84XEAL\_8

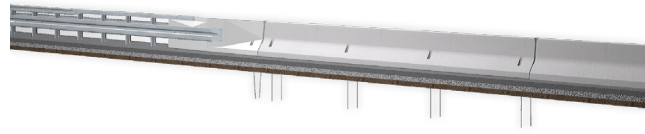
Technical Datasheet

ASI B

TR F31 Super-Rail Eco  
↔ REBLOC 84XEAL-8

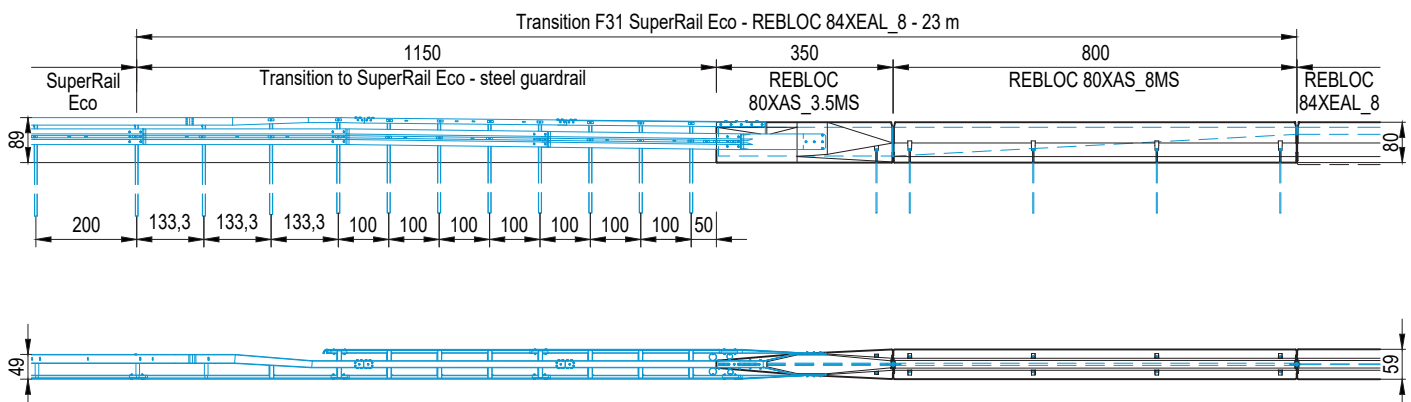
### Transition for safety barriers

Steel guardrail  
↔ Precast Concrete Barrier  
Anchored



### Technical data

Containment level	H2
Working width	W3 ( $W_N \leq 1.0$ m)
Impact severity level	ASI B
Vehicle intrusion	VI3 ( $VI_N \leq 1.0$ m)
Barrier A	Saferoad Super-Rail Eco H2/W4
Barrier B	REBLOC 84XEAL_8 H2/W1
Required elements	REBLOC 80XAS_3.5MS;01   REBLOC 80XAS_8MS;01
Installation   Weight REBLOC 80XAS_3.5MS	anchored on compacted gravel (per element 2 x anchor pins RPIN20_1280)   approx. 2130 kg
Installation   Weight REBLOC 80XAS_8MS;01	anchored on compacted gravel (per element 8 x anchor pins RPIN20_1280)   approx. 4920 kg
Length of transition	23 m
Application	single-sided
Coupling/exposed steel parts	fully integrated, exposed parts hot-dip galvanized
Steel system elements	hot-dip galvanized



all dimensions in cm